

Resilience Grows Here Theory of Change Logic Model

Mission: Creating a community that fosters the health and resilience of veterans across their lifespan



Reduced Veteran Isolation

Community Garden

- RGH Garden build out underway
- Veterans as volunteers signed up to assist in garden construction/maintenance
- Calendar of programs established and occurring using the garden space

Safe, supportive veteran space and programming

- RGH calendar of events established
- Regular use of RGH space
- Increasing number of attendees for each event
- Veteran feedback of feeling safe and supported

Peer to peer support network

- Peer to peer training written
- Peer training delivered to peers
- Peers matched up to veterans in need
- Request for peers from community

Therapy Dog

- Veterans recognizing and requesting Anzac
- Veterans seeking use of service animals for themselves
- Veterans enrolled in therapy dog training with their own dogs through RGH
- Veterans clearly demonstrate increased socialization due to dog presence

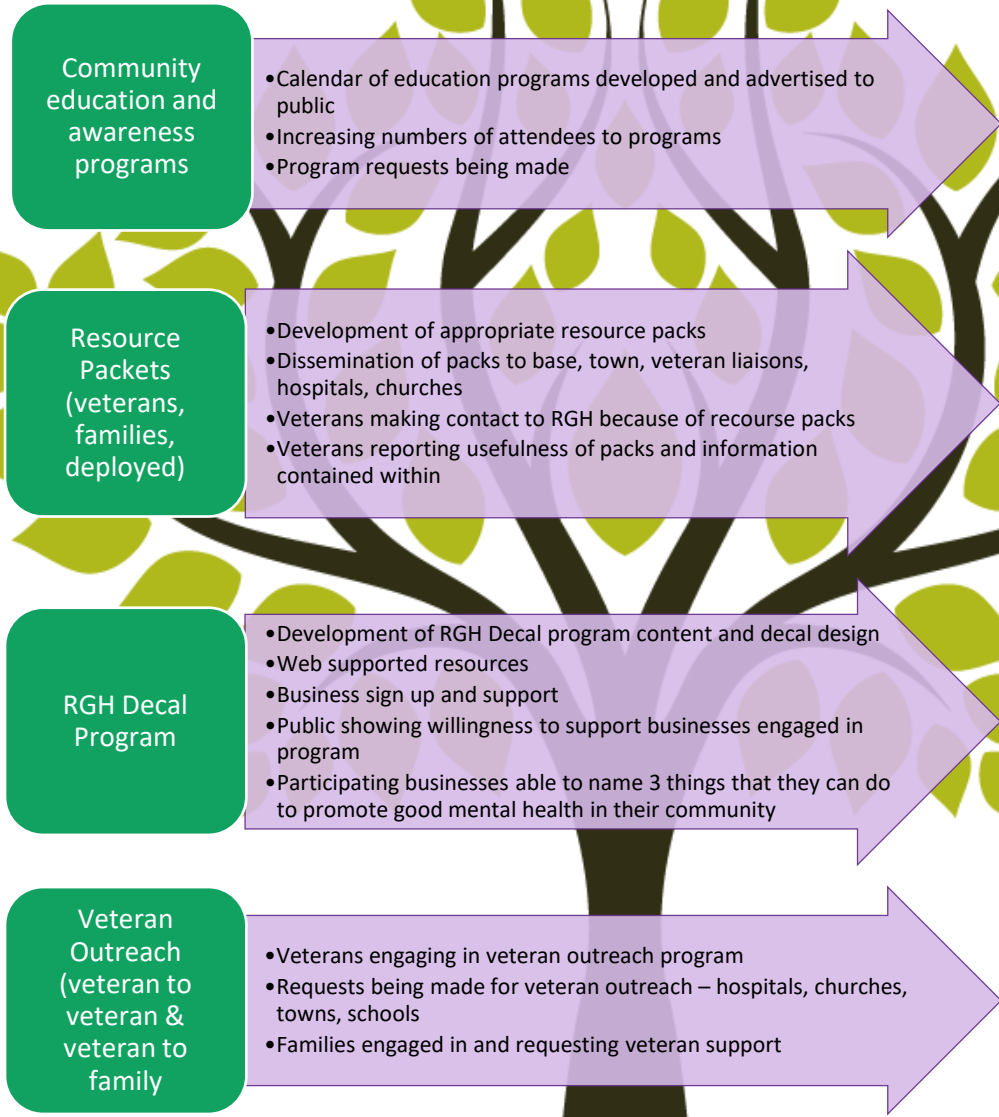
Creating Connections
Reduced veteran isolation by engaging veterans with peers and the broader community

Resilience Grows Here Theory of Change Logic Model

Mission: Creating a community that fosters the health and resilience of veterans across their lifespan



Improve understanding of the needs and sacrifices of veterans and their families



Serving Veteran & Family Needs
Improved community understanding of the needs sacrifices of veterans and their families

Resilience Grows Here Theory of Change Logic Model

Mission: Creating a community that fosters the health and resilience of veterans across their lifespan



Destigmatize mental illness and promote good mental health

Community education and awareness programs

- Calendar of education programs developed and advertised to public
- Increasing numbers of attendees to programs
- Program requests being made

Peer to peer support network

- Peer to peer training written
- Peer training delivered to peers
- Peers matched up to veterans in need
- Request for peers from community

RGH School climate committee

- Established RGH EGHS committee
- Goals and objectives set for the year
- THRIVE tool successfully adapted and used
- Students can name 5 resilient attributes
- Students speak openly about mental health and their needs

RGH Decal Program

- Development of RGH Decal program content and decal design
- Web supported resources
- Business sign up and support
- Public showing willingness to support businesses engaged in program
- Participating businesses able to name 3 things that they can do to promote good mental health in their community

Understanding Mental Health
Improved mental and emotional support for veterans and families. Mental health becomes part of the community agenda

Resilience Grows Here Theory of Change Logic Model

Mission: Creating a community that fosters the health and resilience of veterans across their lifespan



Provide access to programs and services that meet the needs of veterans and their families

Comprehensive services clearinghouse

- Created a web platform to support clearinghouse
- Identified and vetted services to be included
- Understanding of how each service is accessed and pre requisites needed
- Clearinghouse is being accesses and used both online and in person by veterans and their families

RGH Coordinator

- Write job description and advertise position
- Employ successful person
- Support and empower position in outreach to veterans and service providers
- Developed a strong community network and 'go to' list for veterans

Trained Peer – peer network

- Peer to peer training written
- Peer training delivered to peers
- Peers matched up to veterans in need
- Request for peers from community

Non traditional approaches (art, music, yoga, dog etc)

- Integrated non traditional approaches entwined in all RGH programing
- Offer multiple approaches at RGH site for veterans and community to try
- Have access and referrals to additional non traditional approaches like equine therapy

Providing Access
Improved access to programs and services that meet the needs of veterans and their families
Community members will know what services are available and how to direct veterans/families to them